

34th St Traffic Jam

Double Bass

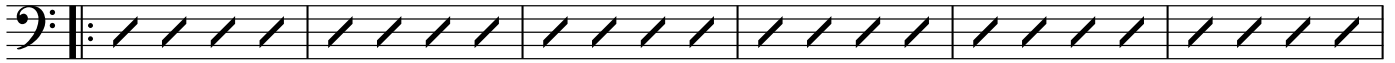
Graham Wood (c) 2012

$\text{♩} = 160$
pizz.

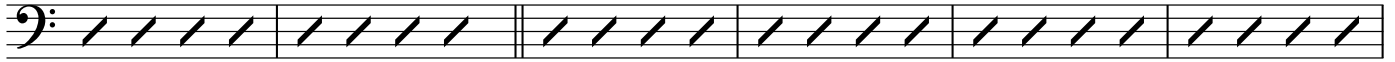


Double Bass

41 Bmaj7 D7 Gmaj7 Bb7 Ebmaj7 Gb7



47 Bmaj7 D7(b9sus4) G7(b9sus4) /: /: /:



53 /: /: Cm6 Bbm11



58 2 F#m11 Ebm11



69 Gmaj9



89 pizz.



Double Bass

94 pizz.

99

104

109

114

118 8